



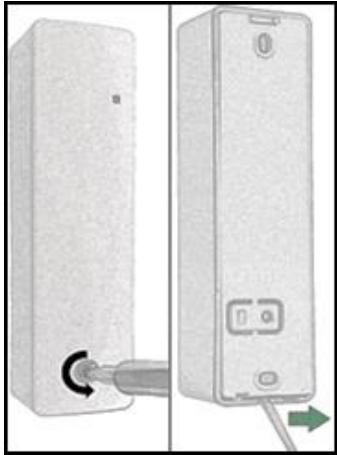
QUICK INSTALLATION GUIDE

DOOR & WINDOW MONITORING DEVICE (LAN-WMBUS-M2)



Recommended mounting instructions:

- For best horizontal range, place the device upright
- For best vertical range, place the device horizontally
- For maximum range, mount device and receiver so they have the same polarization
- Avoid installing magnet and device directly against metallic objects to maximize range and avoid negatively affect the magnet functionality
- Mount magnet so arrows are pointing TOWARDS the device
- Mount either the device or the magnet on the moving part, door or window, and the other part on the immovable part, frame of door or window



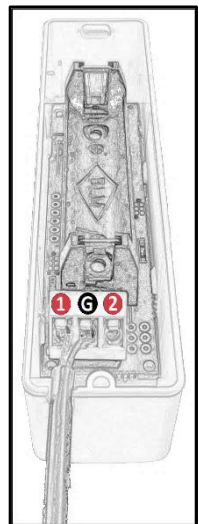
Step 1a (left): Remove screw

Open the device using a torx screwdriver on the front screw. Unscrew by turning counterclockwise.

Step 1b (right): Remove back piece

Separate the back piece by using, for example, a screwdriver at the bottom of the device as in the right picture.

If an external magnet detector (LAN-740-MC) is going to be connected, continue to **Step 2**. Otherwise go to **Step 3**.



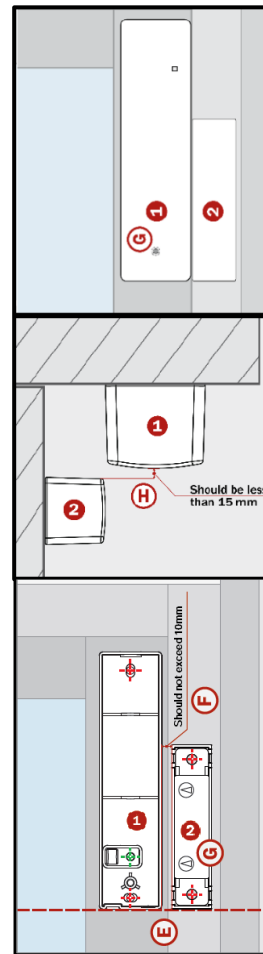
Remove battery before mounting/unmounting cables!

Step 2: Connecting external magnet detector

Cut out the plastic at the bottom according to the picture before mounting the external magnet detector cable. Do NOT connect the two cables which are marked and entwined. Instead, use the two cables without marking.

Connect one cable to input marked by (1).
Connect the other cable to input marked by (G).

Note: Do not insert the battery yet.



Step 4a: Preparing installation (magnet and device)

Before mounting the device (marked by number 1) and magnet (marked by number 2), make sure the magnet can be installed close enough to the device, otherwise the device won't feel the presence of the magnet. Furthermore, the magnet shall be placed on the same side as the screw that is in the device (marked by letter G).

Step 4b: Preparing installation (top view)

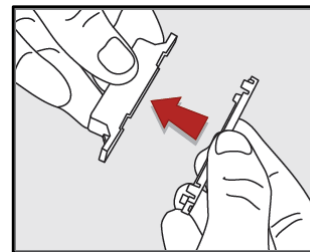
The distance (marked by letter H) between device (1) and magnet (2) should be less than 15 mm from the front of the device to the side of the magnet. Closer is better.

Step 4c: Preparing installation (front view)

The distance (marked by letter F) between device (1) and magnet (2) should be less than 10 mm from the side of the device to the side of the magnet. Closer is better.

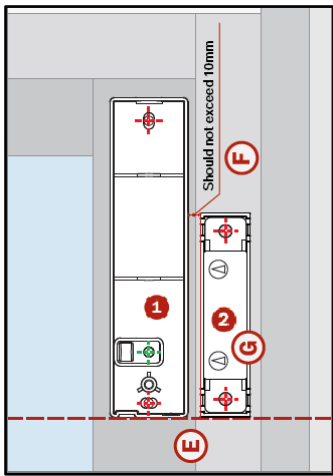
Note: The underside of the magnet and the device should be installed in line (marked by letter E)

Note: Arrows of magnet needs to point towards device.



Step 6: Preparing magnet

Mount the back plastic piece of the magnet onto the back of the magnet.



Step 7: Mount back piece and magnet

Make sure the recommended mounting instructions are used (first section of this document) and the placement and preparations of **Step 4** are done.

Note: The underside of the device (1) and magnet (2) should be installed in line (marked by letter E).

Note: The distance between device (1) and magnet (2) should be closer than 10 mm (marked by letter F).

If pre-drilling is needed: Mark the holes marked by red cross of the back piece (1) and magnet (2).

When everything is setup, attach back piece and magnet with screws.

If an external magnet detector (LAN-740-MC) is going to be connected, continue to **Step 8**. Otherwise skip to **Step 9b**.

Note: Arrows on magnet (2) must point TOWARDS the device (1).

Note: If the device should alert if removed from wall (only for devices with optional sabotage switch), fasten a screw in the hole of the back plastic piece (marked by green cross).

Step 8: Placement and preparation of external magnet functionality

If an external magnet detector (LAN-740-MC) has been attached in **Step 2** then this function needs to be prepared and activated in the device at startup.

The external magnet detector (part with cable attached) and the magnet must be placed so they are closer than 10mm and should be placed so they are in line with each other - Both horizontally, vertically, and height.

If pre-drilling is needed, then mark using the holes of the external magnet detector and the magnet itself and then mount both parts using screws in the holes.

Go to **Step 9a** on how to start the device correctly with external magnet detector.

Step 9a: Activate device with external magnet detector

Insert the battery (throw away the plastic piece) that was removed in **Step 2**. The red LED at the front of the device will flash for 10 seconds if the external magnet detector was detected by the device.

If no flashing is seen: Remove battery for at least 10 seconds. Check that the cable connection at the screw terminal is good and that distance between external magnet detector and magnet is less than 10mm. Once checked, redo this step.

Note: The red LED will not indicate absence of magnet four minutes after startup. To make it work again, redo this step.

Note: Avoid placing external magnet detector and magnet on metallic object as this will negatively affect the functionality of the magnet.

Step 9b: Activate device without external magnet detector

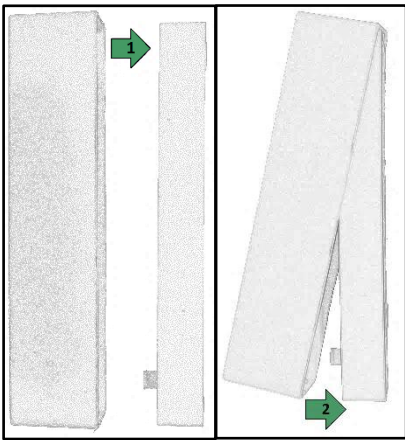
Remove the plastic piece at the battery to start the device. The red LED at the front will light up – Wait until it turns off.

LED does not turn un: Remove battery for at least 10 seconds, then redo this step.

Put the device against the magnet and remove it – If the device successfully felt the presence of the magnet, then the red LED will be on continuously when no magnet is detected.

Note: The red LED will not indicate absence of magnet four minutes after startup. To make it work again, redo this step.

Note: Avoid placing external magnet detector and magnet on metallic object as this will negatively affect the functionality of the magnet.

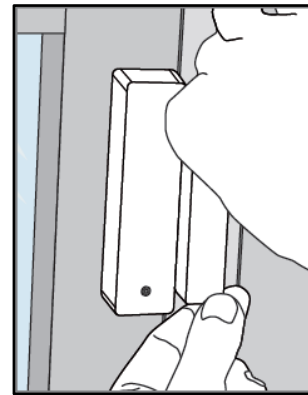


Step 10a (left):

Insert the top part of the front piece onto the top part of the back piece (1).

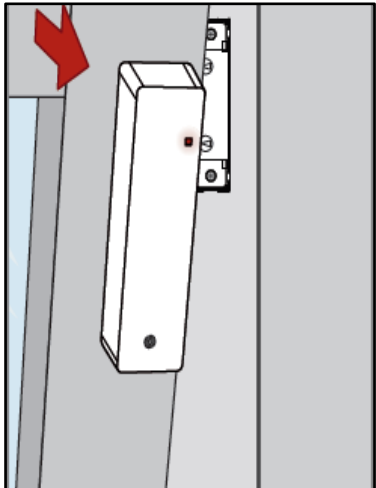
Step 10b (right):

Insert the bottom part of the front piece onto the bottom part of the back piece (2).



Step 12: Attach front of magnet

If everything is working properly, the front of the magnet can be attached. Hold it at the magnet and then push firmly. There should be no gap in the plastic between the magnet and the front and a 'click' will be heard once it's firmly attached.



Step 11: Test successful installation

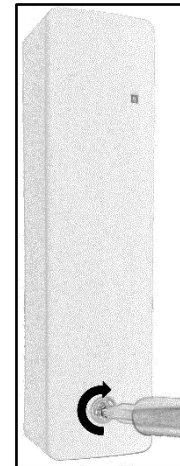
Open door/window so device and magnet are separated. If this test is performed within four minutes after battery was inserted then the red LED at the front of the device will turn on to indicate absence of magnet (alarm).

Close the door/window again. When the device feels the presence of a magnet again, the red LED will turn off again (alarm restored).

If external magnet detector is used: Open door/window so external magnet detector and magnet are separated. If this test is performed within four minutes after battery was inserted then the red LED at the front of the device will turn on to indicate absence of a magnet (alarm).

Close the door/window again. When the device feels the presence of a magnet again, the red LED will turn off again (alarm restored).

Note: Four minutes after startup, the red LED will not indicate absence of magnet. To restart this timer, remove device in reverse order in **Step 10** and remove battery for at least 10 seconds. Redo instructions from **Step 9a** or **Step 9b**.



Step 13: Attach front of device

Put the torx screw from **Step 1** in the hole at the front and tighten the screw using a torx screwdriver.

Installation is now complete!