

LANSEN

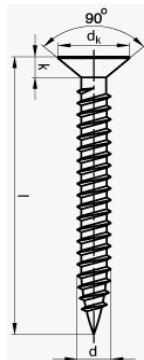
QUICK INSTALLATION GUIDE

TEMPERATURE DEVICE WITH OPTIONAL BATTERY HOLDER (-BH) [LAN-WMBUS-CX-T-(BH)]
TEMPERATURE/HUMIDITY DEVICE WITH OPTIONAL BATTERY HOLDER (-BH) [LAN-WMBUS-CX-TH-(BH)]



Recommended mounting instructions:

- Always mount on an interior wall, e.g., hallway
- Place the sensor 160-180cm above floor
- Mount the device so the hole at the front is down
- Avoid heating/cooling sources (solar radiation, lamps, pipes, extensive airflow, etc.)
- Mount with either double-sided tape or screws
- If screws are used, make sure following requirements are fulfilled:
 - Screw head angle must be at least 90°
 - Screw head diameter (marked d_k) approximately 5mm
 - Screw head thickness (marked k) approximately 1.4mm



Step 1:

Start the device (it cannot be turned off once started).

1. Place a permanent magnet where the green arrow is on the small dent on the enclosure
2. A red LED will turn on - Keep holding the magnet
3. When the LED turns off - Remove the magnet
4. The red LED shall flash for 10 seconds to indicate a successful startup

Note: After startup is complete, the device will flash quick three times every three seconds for 10 minutes. See **Step 5** for more information.

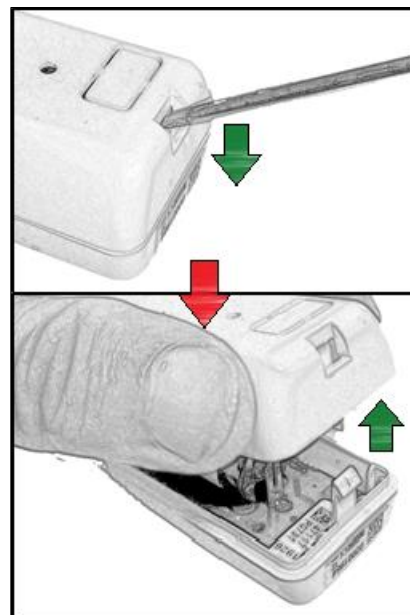
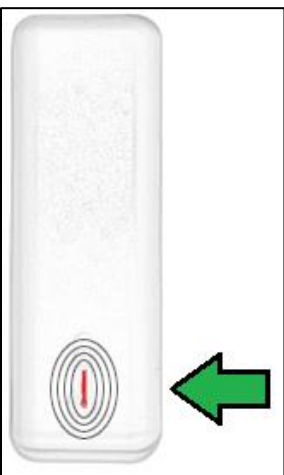
If double-sided tape is going to be used for installation, continue to **Step 2**.

If screws are required for installation, continue to the next **Step 3**.

Step 2 (mounting with double-sided tape):

If the device is going to be mounted on a wall with double-sided tape, simply stick the tape to the back of the device and mount it to a wall using the recommended instructions.

The installation is now complete!



Step 3a (mounting with screws):

Unhook one of the plastic hooks (top or bottom) by pressing down with a small object, for example, a screwdriver.

Step 3b:

Separate the back piece from the front.

Note: If the device has been activated, then the device will indicate by blinking every 250 milliseconds for 3 seconds when the device is opened.

Note (only for LAN-WMBUS-CX-TH): If the device is opened 10 minutes after startup, then a sabotage bit in the wM-Bus telegram will be active for 75 minutes.

Step 4:

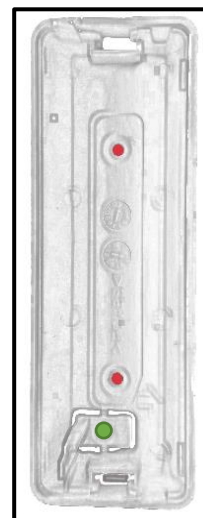
Mount the back piece to a wall with the plastic pin at the bottom using the recommended instructions. Two screws are needed and shall be placed in the two holes marked by red.

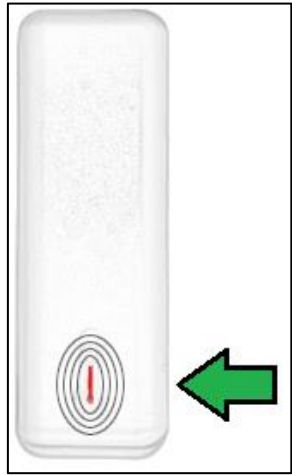
If the device should alert for sabotage when device is removed from a wall, then use a third screw at the hole marked by green.

Note: Device LAN-WMBUS-CX-T does not support sabotage!

Attach the front piece to the mounted back piece. Make sure the hole on the front piece aligns with the plastic pin on the back piece.

The installation is now complete!





Step 5 (optional, checking if device is activated):

Once startup is complete, the device will flash quick three times every three seconds for 10 minutes and then the flashing stops.

If a permanent magnet is applied where the green arrow is on the small dent on the enclosure, the device will indicate again with the LED.

- Steady red LED: Device has not been successfully activated. Redo **Step 2**.
- Flash three times every three seconds: Device is active. The LED will flash like this for 10 minutes again.